

FsxWs - Table of content

FsxWs - Table of content	1
1 How to use	1
1.1 First start of FsxWs	1
1.2 Starting and connecting with FSX	1
1.3 Starting the web server and testing it.....	2
2 Uninstall.....	2
3 FAQs	3

1 How to use

Since the application is mostly self-explanatory only features noteworthy are explained in this manual. Please also check the FAQs at the end of the document.

Note: If you get a virus warning starting FsxWs, see FAQs.

1.1 First start of FsxWs

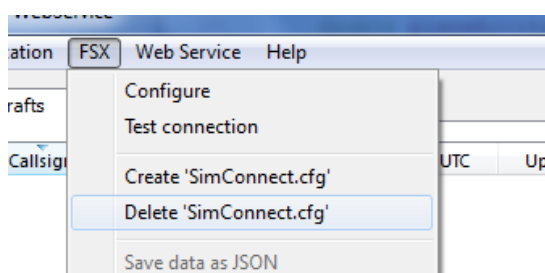
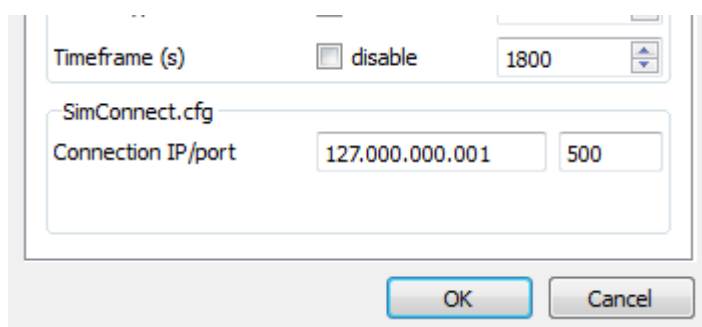
You might get a:

1. Virus warning, due to the internal web server accessing the network.
2. A firewall "access request", again due to the internal web server. Please grant access.

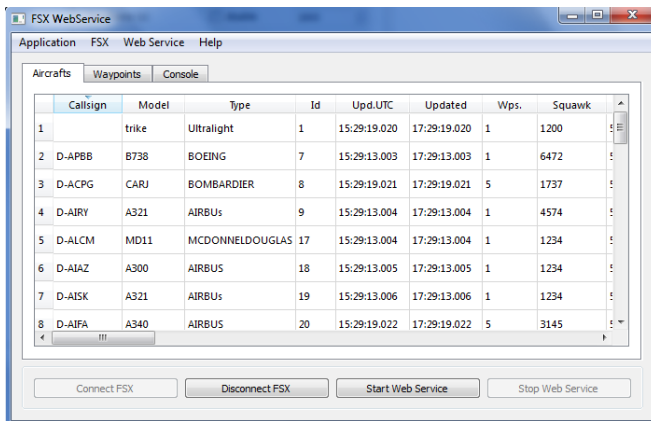
1.2 Starting and connecting with FSX

Basically there are two scenarios.

1. You are already having a valid `SimConnect.cfg` file in place: Just try to connect to FSX, if it is working, you are done.
2. There is no configuration file: You can create one from the program. Make sure you have configured the correct IP for you FSX's computer (or `localhost 127.0.0.1` if this is the same computer you run FsxWs on).

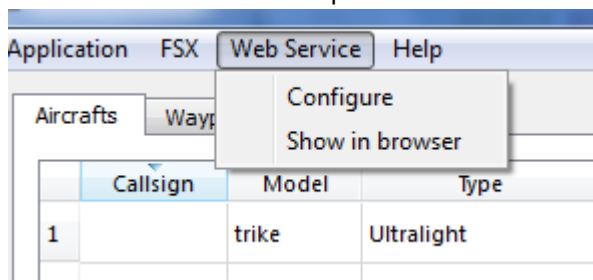


If the program is running correctly and you are connected to FSX (assumed you are on an FSX airport), the output will look like this.



1.3 Starting the web server and testing it

Start the web service and open the browser for a test.



You should see something like this:

Aircrafts

Reload | Fri Oct 12 2012 17:35:31 GMT+0200 (W. Europe Daylight Time)

Id	Title	Model	KML Wps.	Type	Callsign	Last updated TS	Last updated	Height (r
1	trike 1	trike	Wps: 0001 file KML link	Ultralight		1350056131048	17:35:31.048	110.947
8	D-ACPG	CARJ	Wps: 0010 file KML link	BOMBARDIER	D-ACPG	1350056131049	17:35:31.049	110.947
26	D-ABTD	B744	Wps: 0009 file KML link	BOEING	D-ABTD	1350056131051	17:35:31.051	110.947
29	D-AIHD	A340	Wps: 0010 file KML link	AIRBUS	D-AIHD	1350056131053	17:35:31.053	110.947
65	D-AISL	A321	Wps: 0009 file KML link	AIRBUS	D-AISL	1350056131055	17:35:31.055	110.947
74	D-AISI	A321	Wps: 0009 file KML link	AIRBUS	D-AISI	1350056131056	17:35:31.056	110.947
142	D-AIPY	A320	Wps: 0002 file KML link	AIRBUS	D-AIPY	1350056131057	17:35:31.057	237.455
143	D-AIRW	A321	Wps: 0002 file KML link	AIRBUS	D-AIRW	1350056131257	17:35:31.257	233
144	D-ABIC	B735	Wps: 0002 file KML link	BOEING	D-ABIC	1350056131258	17:35:31.258	190

KML models

- [PlaneTriangle.daa](#)
- [PlaneTriangle.skp](#)

Tests

- Show dummy JSON person data, no FSX required [[GO](#)]
- Read dummy person data via JSON and Javascript, no FSX required [[GO](#)]
- Show raw aircrafts JSON data, FSX required [[GO](#)] | No waypoints [[GO](#)]

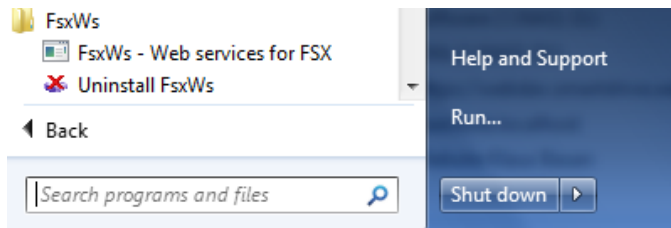
Query parameters

- id ... aircraft id
- test ... true (or not set passed) JSON data just true wor availability
- withwaypoints ... JSON data with/without waypoints
- waypointresolution ... (reduced) waypoint resolution [ms]
- waypointsmax ... max number of waypoints
- reload ... true | false decides whether a KML file (false) or a KML NetworkLink (true) will be created

If you want you can now use FsxWs with [VatGM](#). In this particular case it is recommended to run FsxWs minimized, since there is less CPU load as running it in foreground.

2 Uninstall

There is an uninstaller for FsxWs, just use it. Basically FsxWs is just an `xcopy` deployment, so removing the directory removes the software (no registry entries).



3 FAQs

1. What can I do with the program?

You can use it as basis for a moving map with VatGM (<http://vatgm.codeplex.com/>) or use it as data provider for your own KML / Web service based programs.

2. What is `SimConnect.cfg`?

Read: <http://msdn.microsoft.com/en-us/library/cc526983.aspx#TheSimconnectcfgfile>

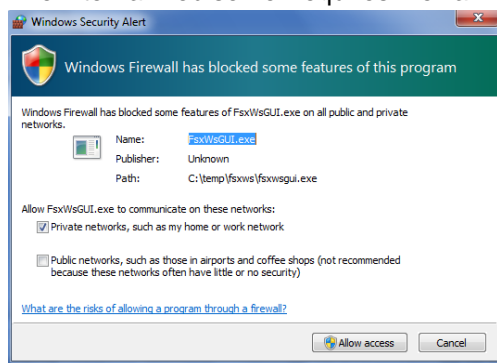
3. Virus warning: I get a virus warning when starting FsxWs, why?

FsxWs starts an internal web server, and / or connects to FSX. Some virus scanners do report a threat on this. Example AVG:



4. I am getting a firewall pop up, why?

The internal web server requires firewall rules, "Allow access".



5. What is VatGM?

Read here: <http://vatgm.codeplex.com/>

6. Can I reduce the CPU load of FsxWs?

Yes, if FsxWs is running minimized (GUI not visible), the data grids are not updated. Hence there is less CPU load than with the GUI displaying the latest data. Using FsxWs minimized is recommended when you just want to provide data (e.g. in combination with VatGM).